

## LINDA VIDLER PARK MASTERPLAN

a place for the community

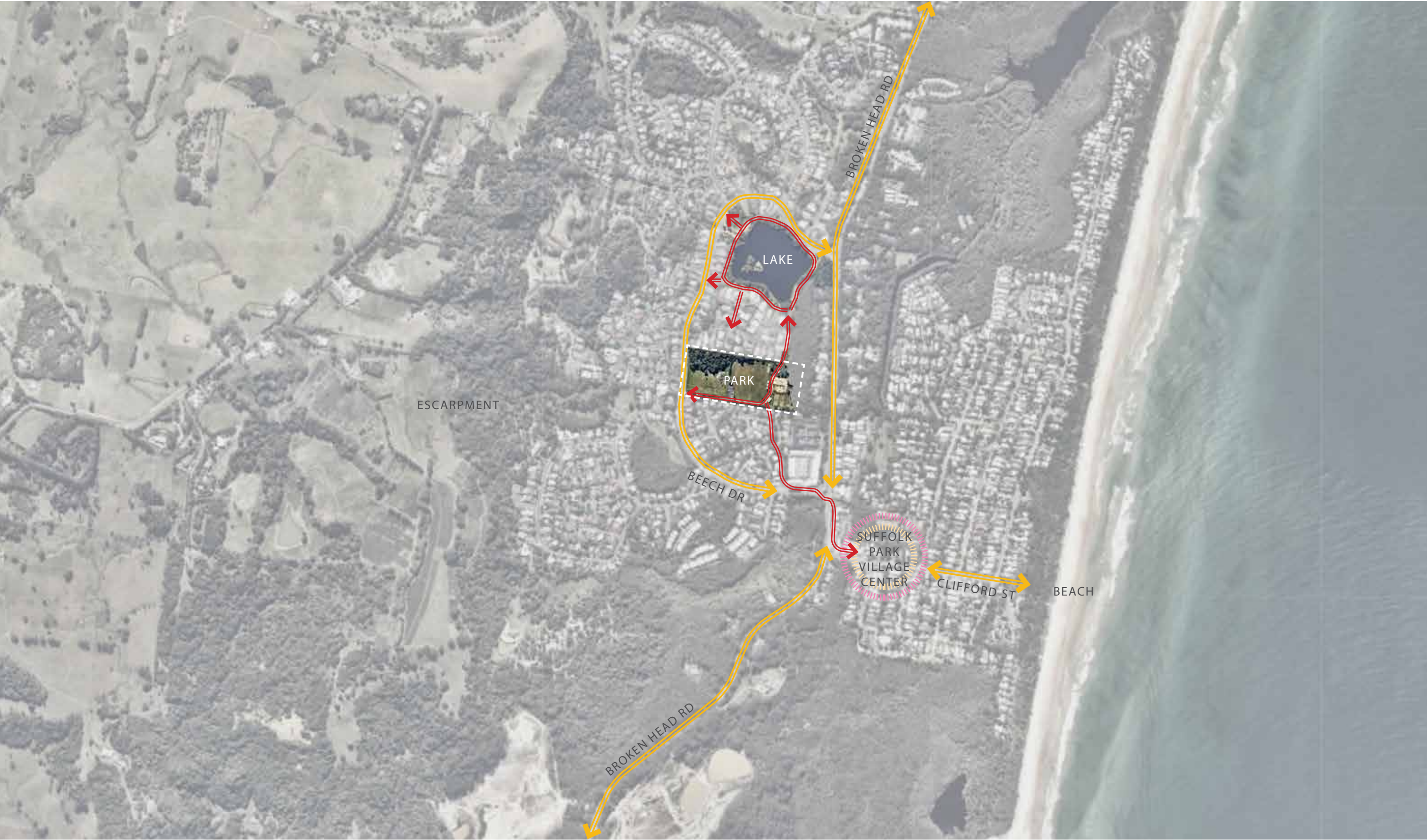


July 2021

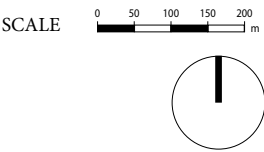
PLUMMER & SMITH  
plummerandsmith.com.au







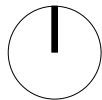
- EXISTING PEDESTRIAN LINKS
- MAIN ROADS AROUND THE SITE



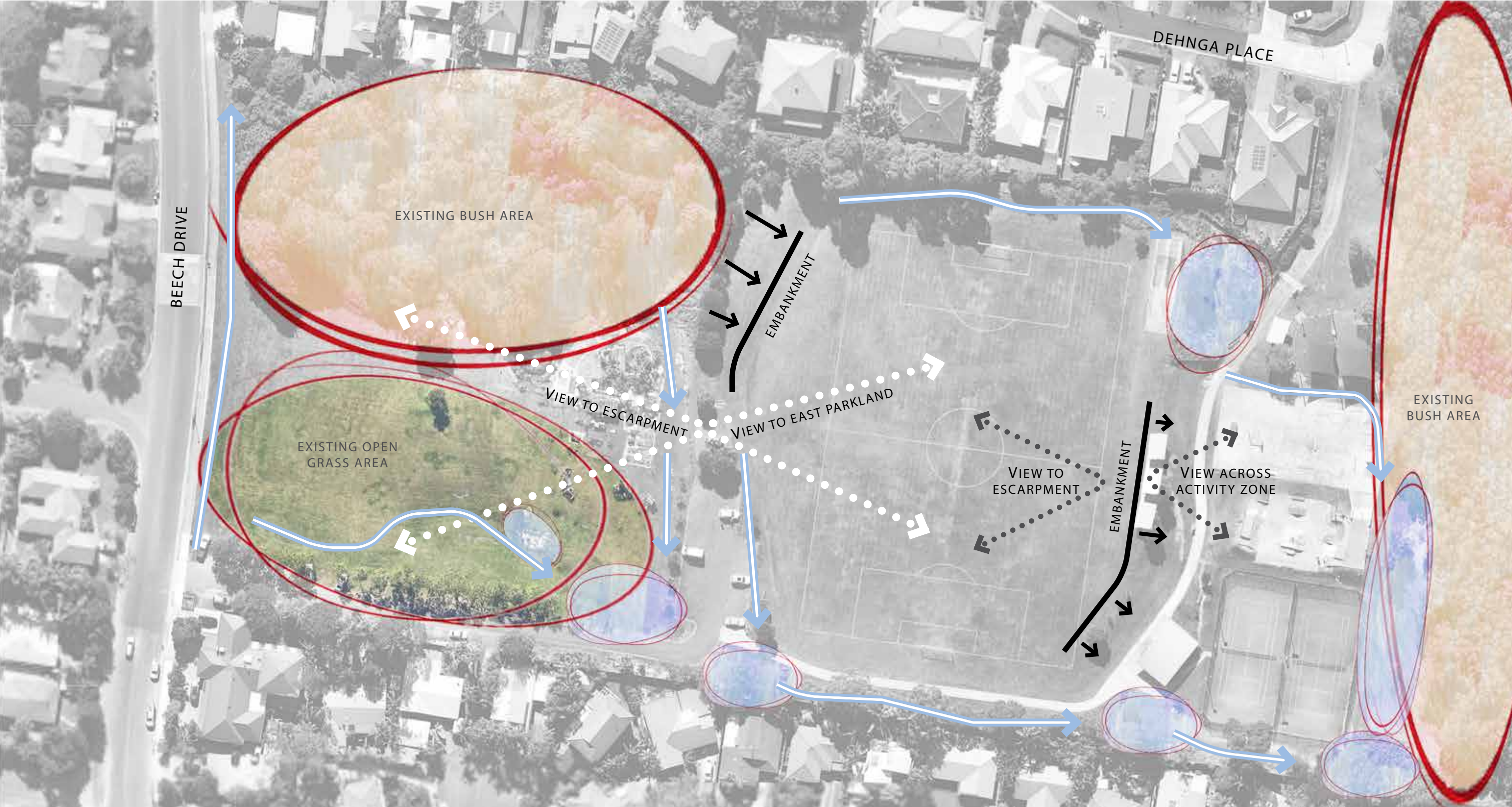







SCALE 0 5 10 15 20 m

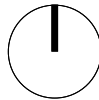











-  DRAINAGE LINES
-  WET AREAS
-  VIEW LINES

SCALE 0 5 10 15 20 m







-  EXISTING PATH LINKS
-  IMPROVE WEST PARK LINKS
-  IMPROVE SOUTH/ EAST PARK LINK
-  IMPROVE PARK CIRCULATION LINKS
-  NATURE TRAILS THROUGH BUSH AREA

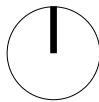
SCALE 0 5 10 15 20 m







SCALE 0 5 10 15 20 m

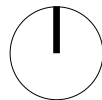




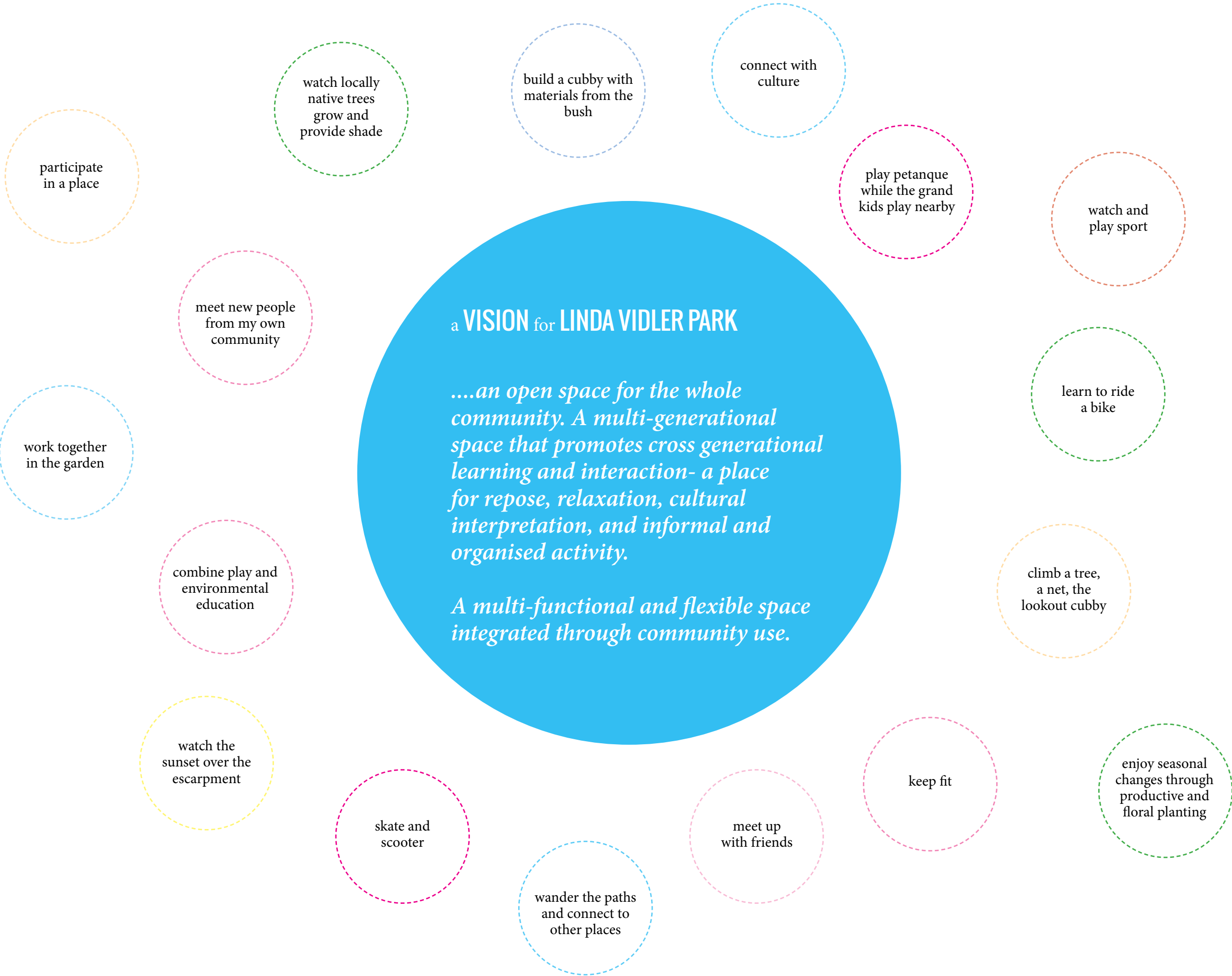
STAKEHOLDERS DESIRED USAGE



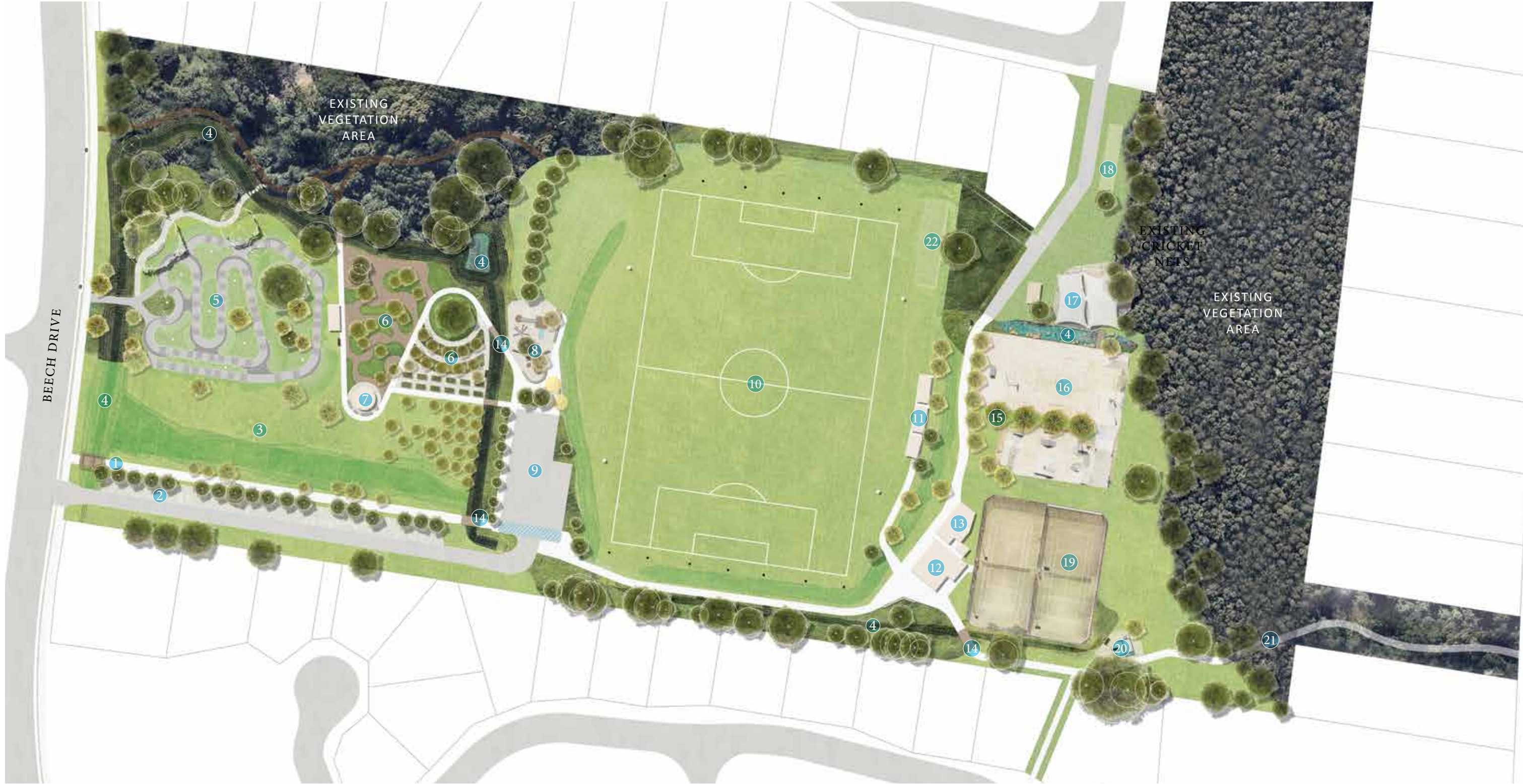
SCALE 0 5 10 15 20 m











1. New pedestrian entry path for improved access and safety- entry to include park signage

2. Informal car parking along access road- area to be re-surfaced

3. Passive open parkland space providing for flexible community use

4. New drainage works to improve site drainage and usability- drainage works to include a combination of turf and planted swales

5. Pump track

6. Community Garden with improved access and circulation

7. Primary park shelter and gathering space- key location for cultural interpretation

8. New nature play space to replace existing playground in this location

9. Existing car park

10. Existing soccer field with proposed upgrades including lighting and infrastructure for temporary netting

11. Existing shelters retained

12. Existing clubhouse building

13. Clubhouse extensions

14. New paths including swale bridge crossings

15. New shade trees

16. Existing basketball and skate park areas retained

17. Existing playground retained


18. Existing petanque court retained

19. Existing tennis courts retained- potential for rebound hitting wall to be installed

20. Exercise equipment area

21. New path connecting to Broken Head Road

22. Existing cricket nets retained



Existing tree to be retained

Proposed tree

Turf

Planting- bushtucker species incorporated into planting areas where-ever possible



CONCEPT PLAN (detail- western end)

1. Park entry including park signage
2. Informal car parking along access road- area to be re-surfaced
3. New pedestrian path improving pedestrian safety and park access
4. New turf swales as part of drainage works
5. Passive open parkland space providing for flexible community use
6. Entry path to pump track
7. Pump track
8. Planted swale as part of improved drainage
9. Informal gravel path and seating in natural shade
10. Bush track through existing vegetation zone
11. Community Garden storage shed- final location to be confirmed during detailed design phases
12. Community Garden and bushtucker planting zones including informal paths and planting, formal plantings, raised planting beds, and cultural and environmental interpretation / information
13. Paths for improved access and circulation through gardens (material to be concrete and/or gravel)
14. Central gathering shelter- key location for cultural interpretation elements and stories
15. Bushtucker, food tree and parkland tree planting
16. Community Garden mound and feature tree to be retained
17. Existing trees to be retained
18. Wetland water body as part of new drainage works
19. Pedestrian bridge over planted drainage swale
20. New nature play area with natural shade from existing and proposed trees
21. Seating walls for play and soccer field viewing
22. Potential sports field lighting
23. Shared zone crossing area for pedestrian and cycling linkages
24. Posts for installation of temporary netting on soccer match days

✱ Potential access gate for controlling vehicular access times- stopping overnight access

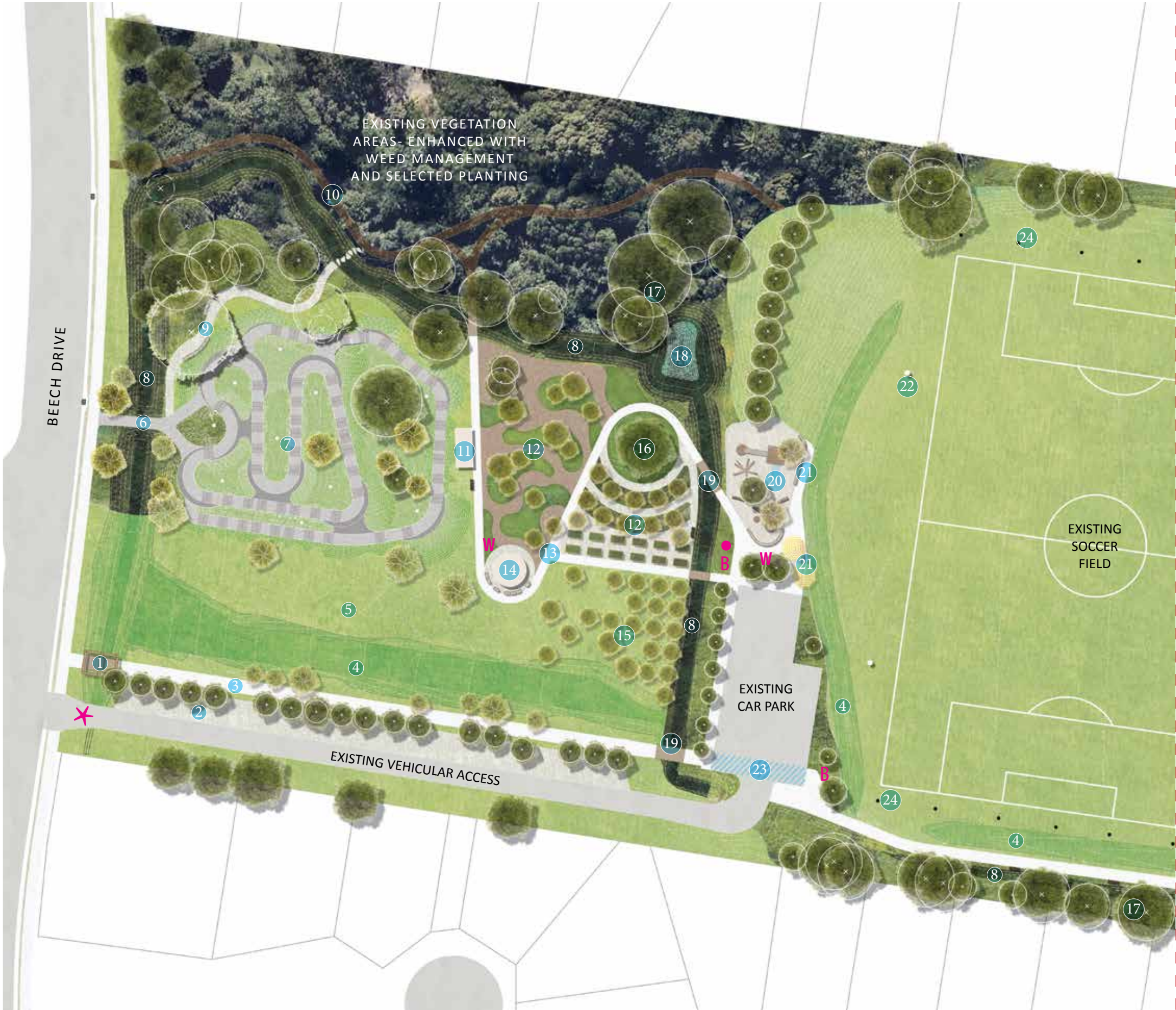
W New water point- final location to be confirmed during detailed design phases

● Bike rack locations

B Bin locations

NOTE: Seats with backrests to be provided at optimal locations along new paths- locations with shade and prospect. Final locations to be confirmed in detail phases

NOTE:  
Cultural content such as art treatments to the entry, the main shelter and to selected path surfaces are to be coordinated with Arakwal Corporation. Arakwal Corporation also to be consulted regarding interpretive signage and elements



JOINS NEXT PAGE



CONCEPT PLAN (detail- eastern end)

- 1. Existing trees to be retained
- 2. New and upgraded turf swales as part of drainage works
- 3. Posts for installation of temporary netting on soccer match days
- 4. Potential sports field lighting
- 5. Existing park and BBQ shelters to be retained
- 6. New concrete path to shelters
- 7. New shade trees
- 8. Seating provided at path network node- potential for cultural interpretation
- 9. Existing clubhouse
- 10. Proposed clubhouse extensions
- 11. Pedestrian bridge over planted drainage swale
- 12. Wetland garden
- 13. Seating wall to existing play edge
- 14. Potential for tennis rebound wall
- 15. Seats in accessible and shaded locations
- 16. Exercise equipment area adjacent to accessible paths and natural shade areas
- 17. Path linking to local streets circulation network
- 18. Path connecting through existing trees to Broken Head Road and associated path network
- 19. Existing cricket nets

W New water point- final location to be confirmed during detailed design phases

Bike rack locations

B Bin locations

NOTE: Seats with backrests to be provided at optimal locations along new paths- locations with shade and prospect. Final locations to be confirmed in detail phases

NOTE: Cultural content such as art treatments to the entry, the main shelter and to selected path surfaces are to be coordinated with Arakwal Corporation. Arakwal Corporation also to be consulted regarding interpretive signage and elements







Example of feature gathering space that incorporates cultural interpretation



Example feature shelter and cultural interpretation panel- incorporating gathering, shade, and cultural art / interpretation



Example of accessible parkland seating



Example of feature timber arbour- reference for potential entry arbour and park name signage



Examples of drainage combining with circulation to provide park amenity



Examples bike racks



